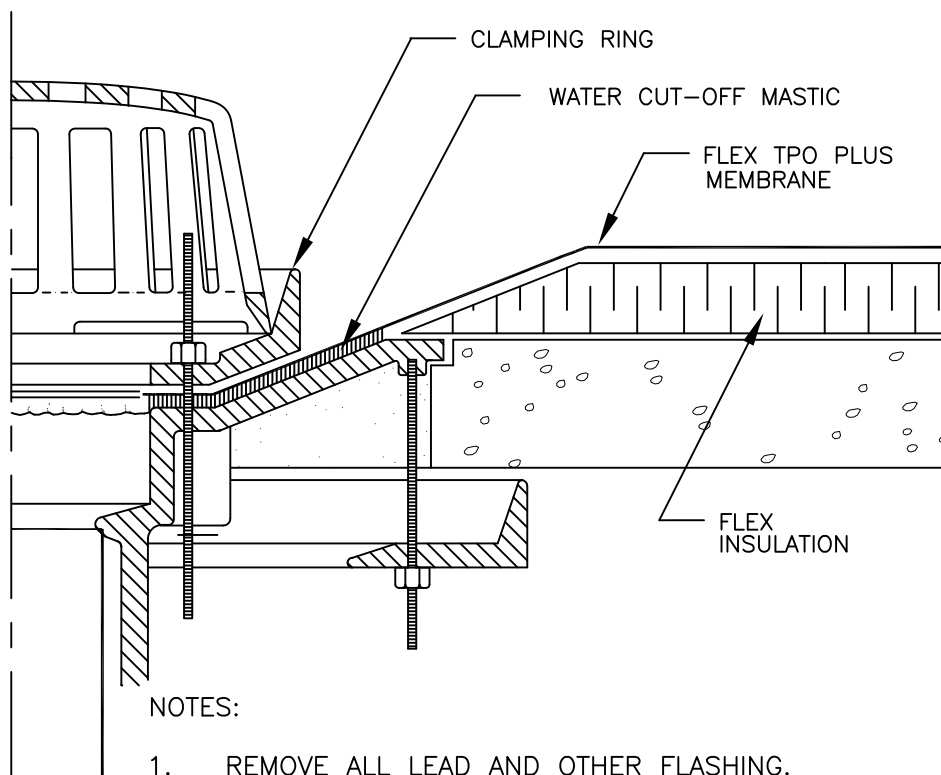
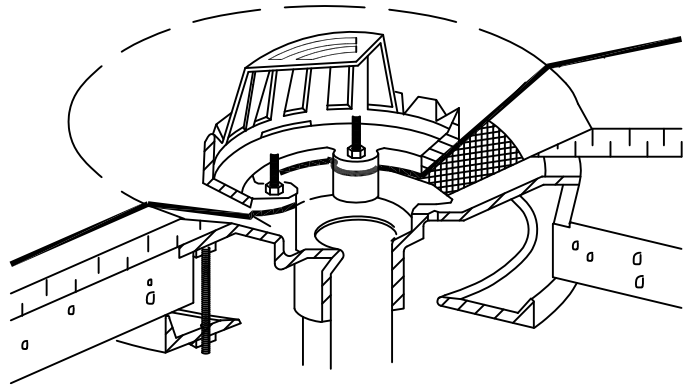

FLEX TPO PLUS MECHANICALLY FASTENED ROOFING SYSTEM

FOR DRAINS WITH TAPERED
INSULATION AT DRAIN SUMP
LESS THAN 3 INCHES TO 1
HORIZONTAL FOOT
(75 mm/300 mm)



NOTES:

1. REMOVE ALL LEAD AND OTHER FLASHING.
2. ALL BOLTS AND CLAMPS MUST BE IN PLACE TO PROVIDE CONSTANT COMPRESSION ON WATER CUT-OFF MASTIC.
3. CUT THE MEMBRANE SO IT EXTENDS A MINIMUM OF 1/2" (13 mm) FROM THE ATTACHMENT POINTS OF THE DRAIN CLAMPING RING.
4. FOR DRAIN SUMPS WITH SLOPES GREATER THAN 3" (75 mm) IN 12" (300 mm) REFER TO DETAIL TPO 4.02.
5. IT IS PREFERRED TO LOCATE SPLICES AT LEAST 6" (150 mm) OUTSIDE DRAIN SUMP. IF SPLICES EXTEND UNDER CLAMPING RING, ENTIRE SPLICE OVERLAP MUST BE HOT AIR WELDED.