

Purlin Fastener

PRODUCT DATA SPECIFICATIONS

PRODUCT DESCRIPTION

The Flex Purlin Fastener is designed for attaching single-ply membrane systems to structural steel purlins (12–18 gauge) in standing seam metal roof retrofit applications.

The Flex Purlin Fastener has a 3/4-in. drill point which allows the screw to quickly drill through the purlin before the threads engage into the standing seam metal roof. This greatly reduces point burnout and breakage as well as eliminates “jacking” between purlin and standing seam metal.

The Flex Purlin Fastener is available in lengths from 2-in. to 8-in.

The Flex Purlin Fastener is Factory Mutual and Miami-Dade County approved.

FEATURES & BENEFITS

- The Flex Purlin Fastener drills through up to 12 gauge steel in seconds.
- The 3/4-in. drill point allows the fastener to be drilled through the purlin before the threads engage into the standing seam metal roof.
- Low profile hex head has a smooth surface to ensure that there is no damage to the membrane.
- F.M. and Miami-Dade County approved.

COATING

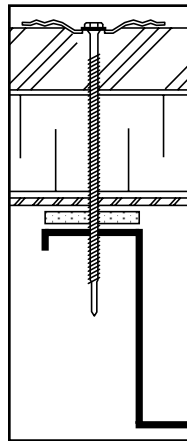
CR-10 corrosion resistant coating exhibits less than 15% red rust after 30 Kesternich cycles. CR-10 coating exceeds F.M. Approval Standard 4470.

APPLICATION

The Flex Purlin Fastener must penetrate the purlin a minimum of 1-in. This ensures a minimum of 1/4-in. thread penetration into the structural member.

Using a screw gun with a maximum of 1800 RPM, drive the fastener through the purlin until a slight depression is seen around the plate.

Note: Caution should be taken not to overdrive the fastener causing stress plate surface to deflect more than 1/16-in. Prior to job bid, contact Flex to visit the job site and inspect the deck.



PLATES & ACCESSORIES

Use 2-in. appropriate stress plate.

For best installation results, use a high torque, low RPM screw gun. **See Accessories section.**

APPROVALS



USE WITH
P
DECK TYPES

PHYSICAL DATA*

The data below is constant for each Flex Purlin Fastener.

HEAD	THREAD
1/4" Hex .435" Diameter	.210" Diameter
SHANK	COATING
.170" Diameter	CR-10

ORDERING INFORMATION

CAT. NO.	LENGTH	THREAD	PKG	WEIGHT
PUR200	2"	1.125"	1000	15 lbs.
PUR334	3 3/4"	Full	500	13 lbs.
PUR434	4 3/4"	3"	500	16 lbs.
PUR534	5 3/4"	3"	500	20 lbs.
PUR700	7"	3"	500	24 lbs.
PUR800	8"	3"	500	27 lbs.

PL2803 Rev. 07/15

Each Purlin Fastener has a 3/4-in. drill point. Therefore, the effective fastening length is 3/4-in. less than actual length.

*All sizes are nominal.



Thermoplastic Single Ply and Multi-Ply Roofing Systems

800-969-0108 • 610-916-9501 (Fax)

2670 Leiscz's Bridge Road, Suite 400, Leesport, PA 19533

e-mail: flexroof@cs.com • www.flexroofingsystems.com

KEY:

S Steel	SC Structural Concrete
W Wood	LC Lightweight Concrete
G Gypsum	LWIC Lightweight Insulating Concrete
P Purlins	CWF Cementitious Wood Fiber

Purlin Fastener

PRODUCT DATA SPECIFICATIONS

SPECIFICATION

The fastener will be a Flex Purlin Fastener with a nominal shank diameter of .170 and a thread diameter of .210. The Flex Purlin Fastener will be used with a Factory Mutual approved Flex 2-in. round pressure plate or batten bar. The fastener must be Factory Mutual approved and made in America.

APPLICATION

Using a screw gun with a maximum of 1800 RPM, drive the Flex Purlin Fastener into the purlin until a slight depression is seen around the plate. The Flex Purlin Fastener must penetrate through the purlin a minimum of 1-in.

Note: Caution should be taken not to overdrive the fastener causing the stress plate to deflect more than 1/16-in. Prior to job bid, contact Flex to visit the job site and test the fastener.

PHYSICAL DATA

The data below is constant for each Flex Purlin Fastener.

HEAD	THREAD
1/4" Hex .435" Diameter	.210" Diameter 16 T.P.I.
SHANK	COATING
.170" Diameter	CR-10
	PACKAGING
	500/carton 2" – 1,000/carton

PURLIN FASTENER LENGTH SELECTION PROCEDURE

PURLIN FASTENER LENGTH	COMBINED THICKNESS OF MEMBRANE AND/OR EXISTING SUBSTRATE	
	USABLE LENGTH	MAX. TOTAL THICKNESS
2"	1 1/8"	3/4"
3 3/4"	3"	2 3/4"
4 3/4"	4"	3 3/4"
5 3/4"	5"	4 3/4"
7"	6 1/4"	6"
8"	7 1/4"	7"



Thermoplastic Single Ply and Multi-Ply Roofing Systems

800-969-0108 • 610-916-9501 (Fax)

2670 Leisz's Bridge Road, Suite 400, Leesport, PA 19533

e-mail: flexroof@cs.com • www.flexroofingsystems.com