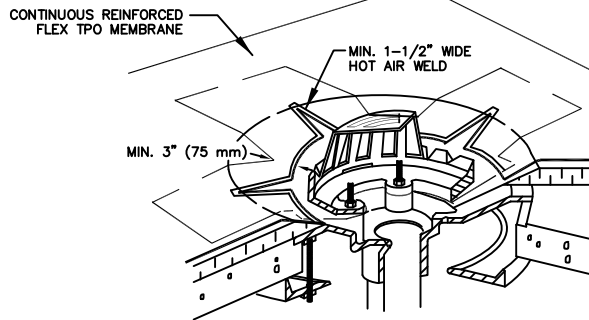
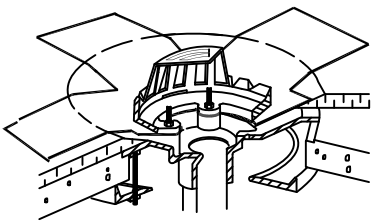
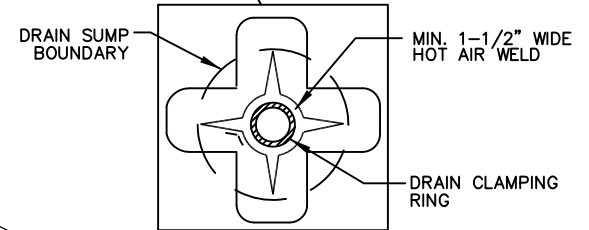


CUT SECTION OF FLEX TPO ADHERED MEMBRANE AS SHOWN AND POSITION INTO DRAIN SUMP. EXTEND MEMBRANE OUT OF DRAIN SUMP APPROX. 6" (ROUND CORNERS).



APPROX. 6' x 6' FLEX TPO ADHERED MEMBRANE CUT TO LAY FLAT IN SUMP AREA



EXTEND 6' x 6' FLEX TPO PLUS REINFORCED MEMBRANE ONTO MEMBRANE SECTION POSITIONED AT DRAIN SUMP AND CUT AS SHOWN TO LAY FLAT IN SUMP. HOT-AIR WELD A MINIMUM OF 1-1/2" (40 mm) COMPLETELY SURROUNDING CUT AREA. HOT-AIR WELD OUTER PERIMETER OF FLEX TPO REINFORCED MEMBRANE TO INSTALLED FLEX TPO ADHERED MEMBRANE.

FOR DRAINS WITH TAPERED INSULATION AT DRAIN SUMP GREATER THAN 3" TO 1 HORIZONTAL FOOT (75 mm/300 mm)

NOTES:

1. REMOVE ALL LEAD AND OTHER FLASHING.
2. ALL DRAIN BOLTS OR CLAMPS MUST BE IN PLACE TO PROVIDE COMPRESSION ON WATER CUT-OFF MASTIC.
3. CUT MEMBRANE SO IT EXTENDS A MINIMUM OF 1/2" (13 mm) FROM ATTACHMENT POINTS OF THE CLAMPING RING.
4. APPROX. 1/8" (3 mm) DIAMETER BEAD OF CUT-EDGE SEALANT IS REQUIRED ON CUT EDGES OF FLEX TPO ADHERED MEMBRANE.

TITLE		ROOF DRAIN II
NAME		DETAIL NO. 4.20
DRAWN BY:	DATE:	SK 8/2012
APPLICABLE TO ALL FLEX		
TPO ADHERED SYSTEMS		
FLEX MEMBRANE INTERNATIONAL	2670 LEISCZ'S BRIDGE RD. LEESPORT, PA 19533 800-969-0108 FlexRoofingSystems.com	