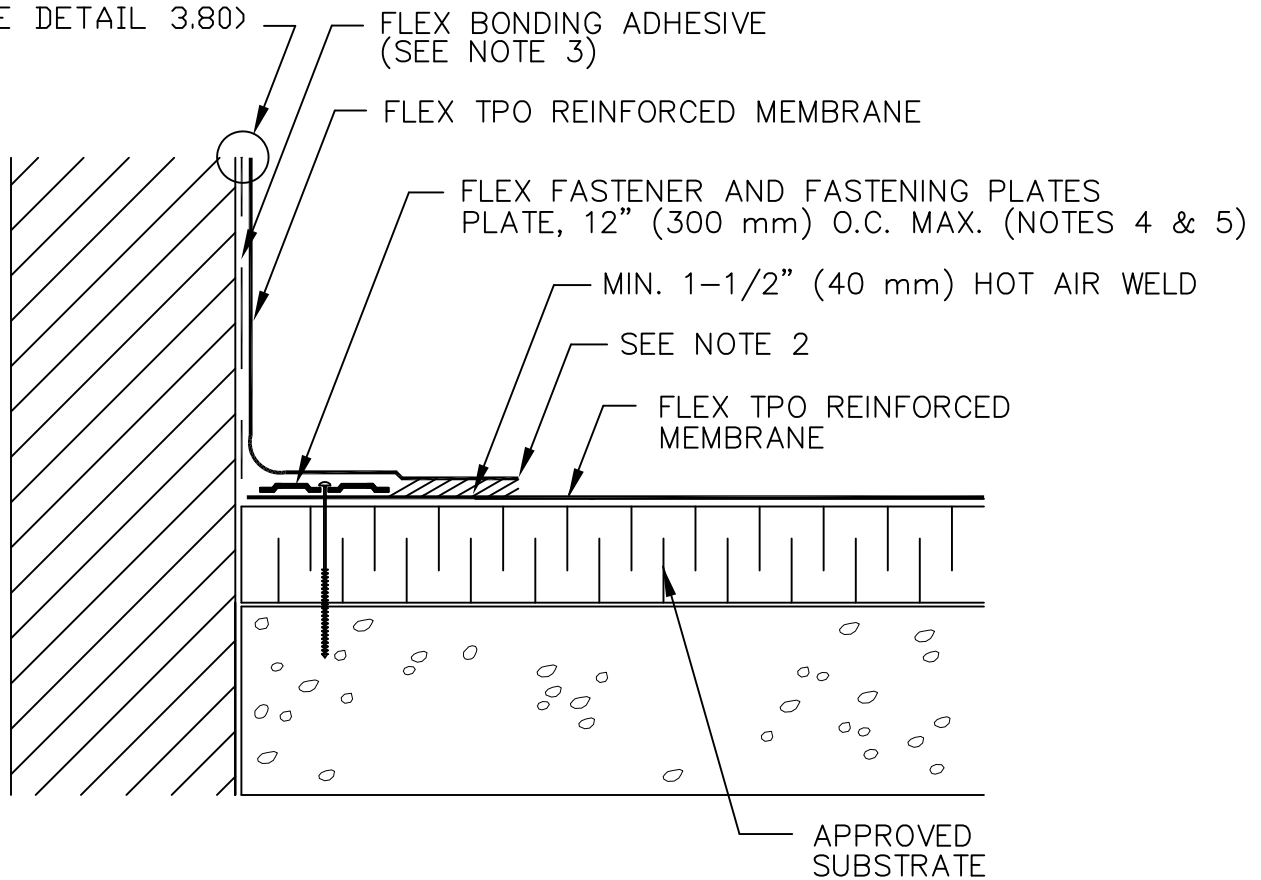


CREASE MEMBRANE AT ANGLE CHANGE TO
LIMIT BRIDGING TO 3/4" (19 mm) MAXIMUM

FLEX APPROVED TERMINATION
(SEE DETAIL 3.80)



NOTES:

1. POSITION FASTENING PLATES 1/2" (13 mm) TO 1" (25 mm) FROM EDGE OF DECK MEMBRANE.
2. APPROXIMATELY 1/8" (3 mm) DIAMETER BEAD OF CUT-EDGE SEALANT IS REQUIRED ON ALL NON FACTORY CUT EDGES OF FLEX TPO REINFORCED MEMBRANE.
3. WHEN COUNTERFLASHING IS USED FOR TERMINATION, BONDING ADHESIVE IS NOT REQUIRED WHEN FLASHING HEIGHT IS 12" (300 mm) OR LESS. WHEN COPING OR A TERMINATION BAR IS USED, ADHESIVE MAY BE ELIMINATED WHEN FLASHING HEIGHT IS 18" (500 mm) OR LESS.
4. FLEX XHD FASTENER AND PLATE OR FLEX SXHD FASTENER AND PLATE ARE REQUIRED OVER STEEL AND WOOD DECKS. REFER TO MANUFACTURERS APPROVALS FOR MEMBRANE FASTENING CRITERIA FOR PROPER FASTENERS AND PLATES.
5. FASTENING PLATES CAN BE INSTALLED VERTICALLY.

| | | |
|-----------------------------------|--|------------------|
| TITLE | | PARAPET FLASHING |
| NAME | | DETAIL NO. 3.60 |
| DRAWN BY: | SK | DATE: 8/2012 |
| APPLICABLE TO ALL FLEX TPO | | |
| MECHANICALLY FASTENED SYSTEMS | | |
| FLEX MEMBRANE INTERNATIONAL | 2670 LEISCZS BRIDGE RD LEESPORT, PA 19533 800-969-0108 FlexRoofingSystems.com | |