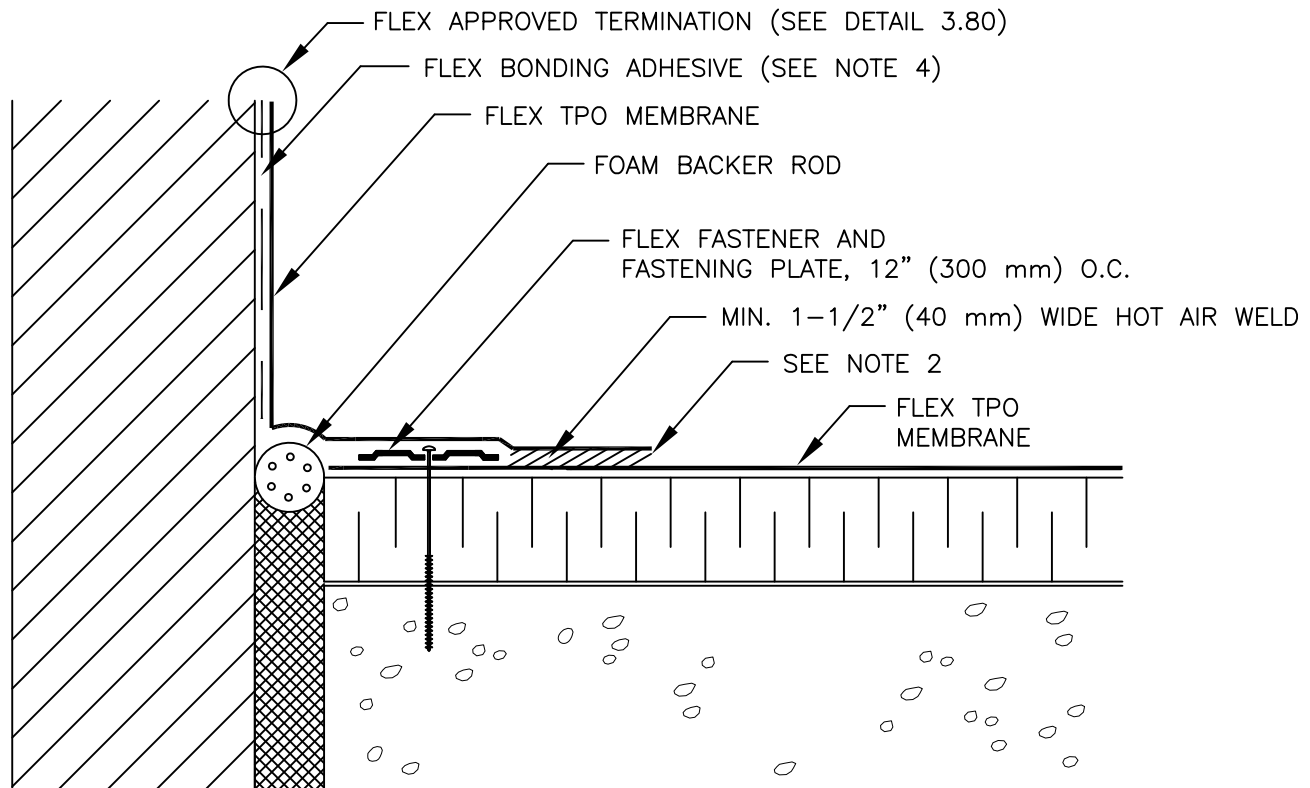


CREASE MEMBRANE AT ANGLE CHANGE TO  
LIMIT BRIDGING TO 3/4" (19 mm) MAXIMUM



NOTES:

1. POSITION FASTENING PLATES 1/2" (13 mm) MINIMUM TO 1" (25 mm) MAXIMUM FROM EDGE OF DECK FLANGE.
2. APPROXIMATELY 1/8" (3 mm) DIAMETER BEAD OF EDGE SEALANT IS REQUIRED ON CUT EDGES OF FLEX TPO PLUS MEMBRANE.
3. REFER TO MANUFACTURES APPROVALS FOR MEMBRANE FASTENING CRITERIA FOR PROPER FASTENERS AND PLATES.
4. FLEX BONDING ADHESIVE IS REQUIRED REGARDLESS OF TERMINATION HEIGHT.
5. WIDTH OF JOINT SHALL BE A MINIMUM OF 3/4" (19 mm) AND SHALL NOT EXCEED 2" (50 mm).

|                                   |                                                                                        |
|-----------------------------------|----------------------------------------------------------------------------------------|
| TITLE<br>EXPANSION JOINT AT WALL  |                                                                                        |
| NAME<br>DETAIL NO. 3.20           |                                                                                        |
| DRAWN BY:<br>SK                   | DATE:<br>8/2012                                                                        |
| APPLICABLE TO ALL FLEX TPO        |                                                                                        |
| MECHANICALLY FASTENED SYSTEMS     |                                                                                        |
| FLEX<br>MEMBRANE<br>INTERNATIONAL | 2670 LEISCZS BRIDGE RD<br>LEESPORT, PA 19533<br>800-969-0108<br>FlexRoofingSystems.com |