

# FLEX MEMBRANE INTERNATIONAL

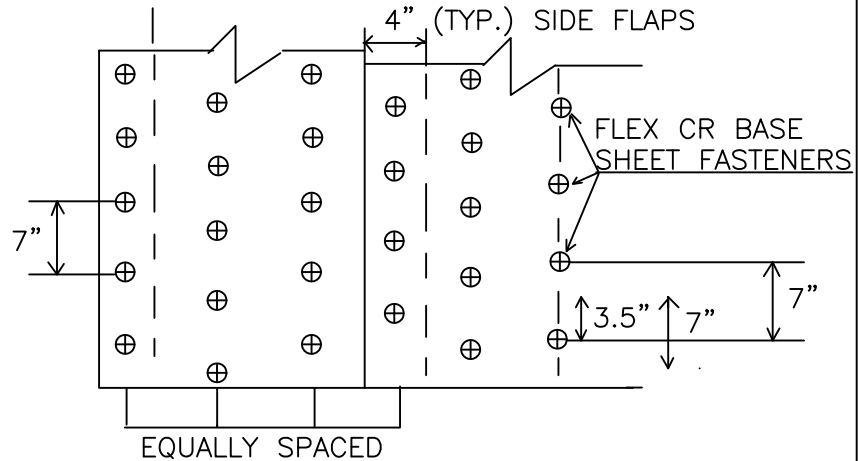
PH-800-969-0108 FX-610-916-9510 WWW.FLEXROOFINGSYSTEMS.COM

## FLEX BASE SHEET FASTENING GUIDE 7-7-7

**IMPORTANT NOTE:** Fastener density and spacing vary depending on applicable uplift requirements. Local codes, governing approval bodies, membrane manufacturers, and individual roofdeck manufacturers all may have specific requirements that need to be addressed prior to beginning any roof project. These illustrations depict typical Factory Mutual Approved fastening patterns widely accepted for use by membrane and roofdeck manufacturers.

### FIELD ATTACHMENT

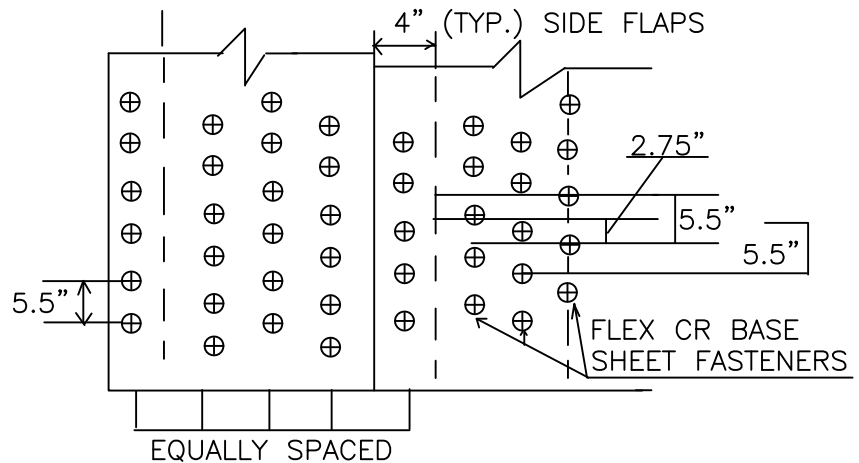
This pattern calls for fasteners 7" on center in the side laps and 7" on center in two staggered rows between the side laps. When fastening meter-wide material with this pattern, expect to use approximately 174 fasteners per square.



### PERIMETER ATTACHMENT

The defined perimeter area has an increased fastener density of 70%.

This perimeter pattern calls for fasteners 5.5" on center in the side laps and 5.5" on center in three staggered rows between the side laps. When fastening meter-wide material with this pattern, expect to use approximately 296 fasteners per square.



### CORNER ATTACHMENT

The corner areas have an increased fastener density of 160%.

This corner pattern calls for fasteners 4.5" on center in the side laps and 4.5" on center in four staggered rows between the side laps. When fastening meter-wide material with this pattern, expect to use approximately 452 fasteners per square.

